

The regional picture

Lorna Fitzjohn, Regional Director

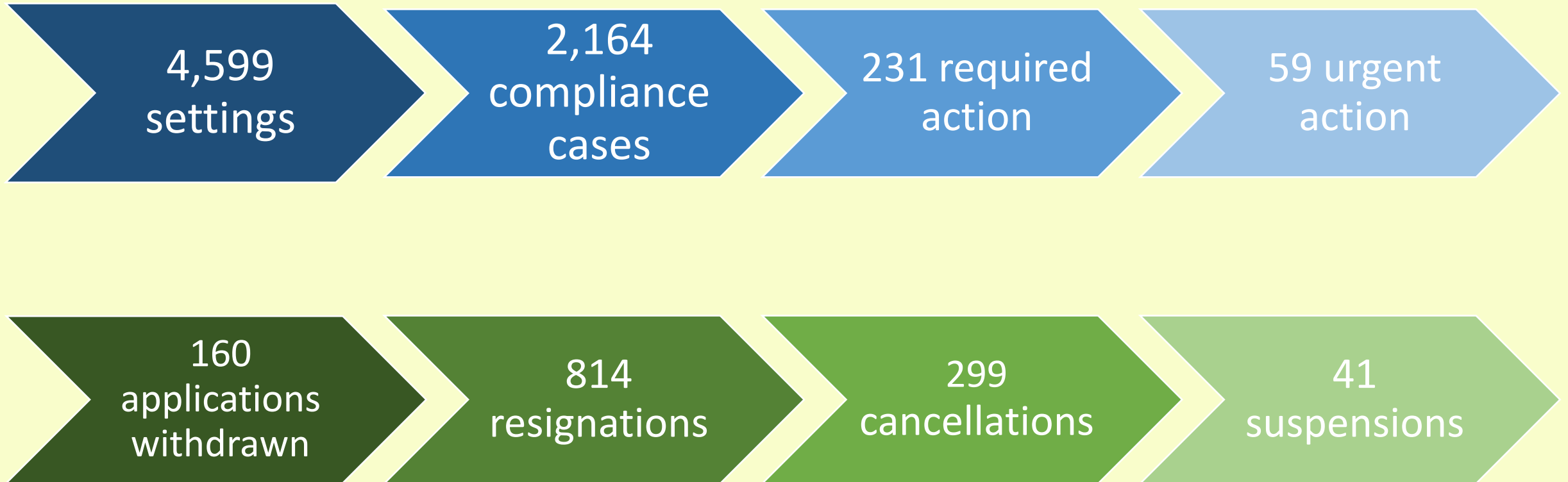
Sally Wride, Senior Inspection Manager



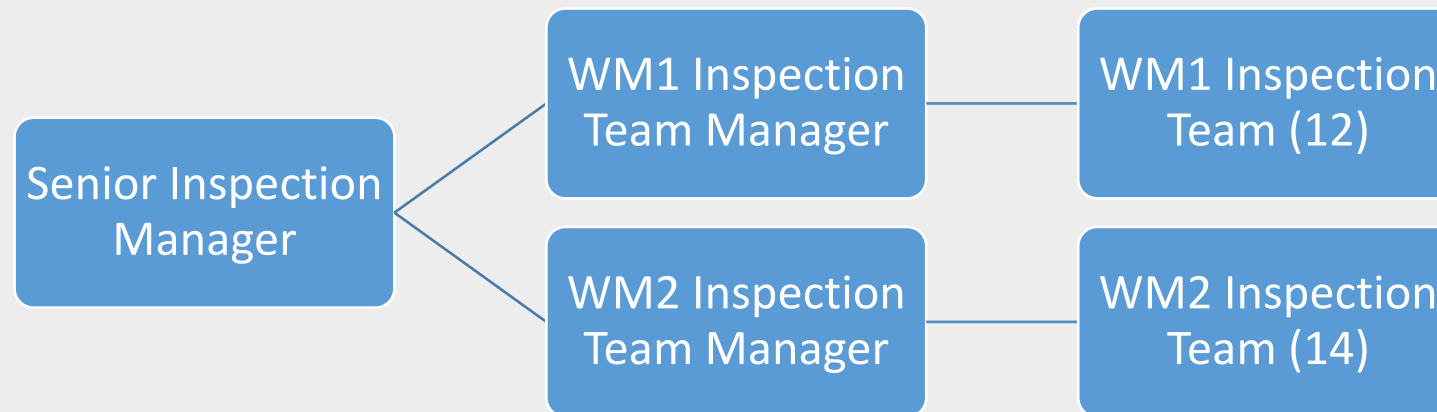
What's happening in our region

- One year on from bringing inspection back in house
- Early years programme bringing the two early years team together
- Renewed sense of direction for early years
- Making the best of local intelligence
- Continue to focus resource on settings that are not yet good and those who are declining

In 2017/18 we had....



EYDU West Midlands Team

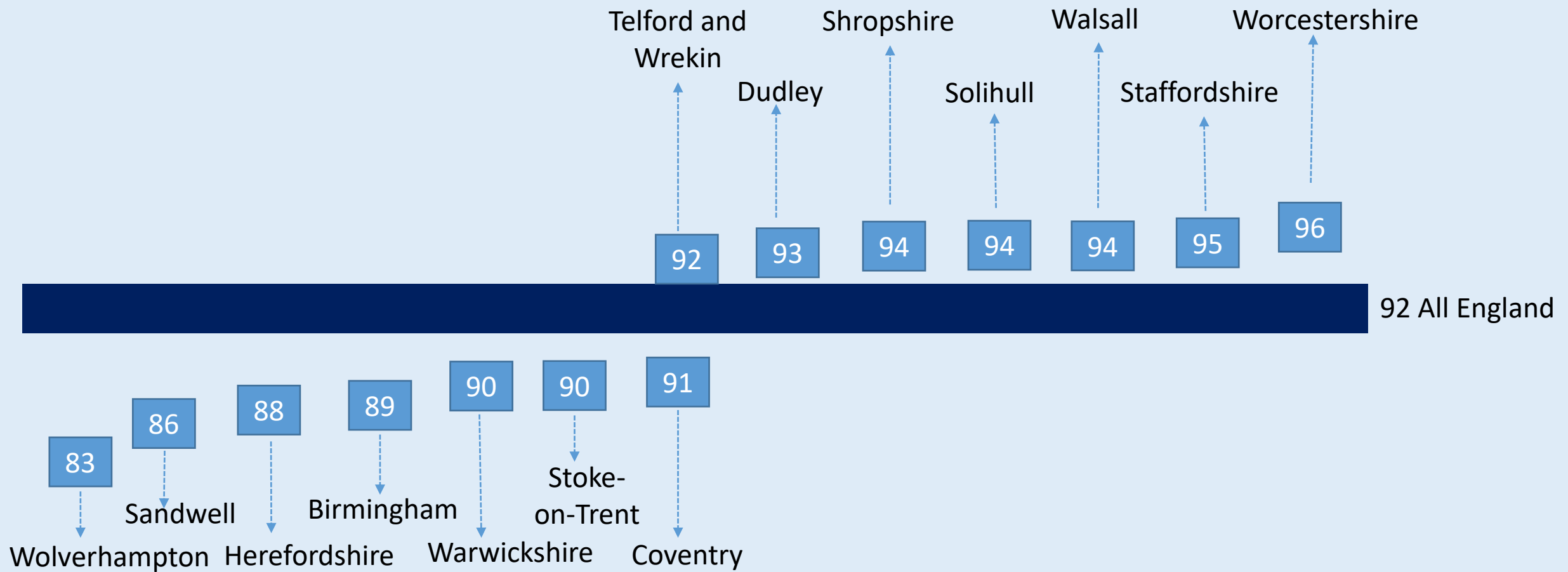


- The current inspection cycle runs from 1 August 2016 to 31 July 2020.
- At 30 April 2018, we hit the 44% mark of the inspection cycle.
- At this stage in the West Midlands, 47% of cycle inspections were complete.

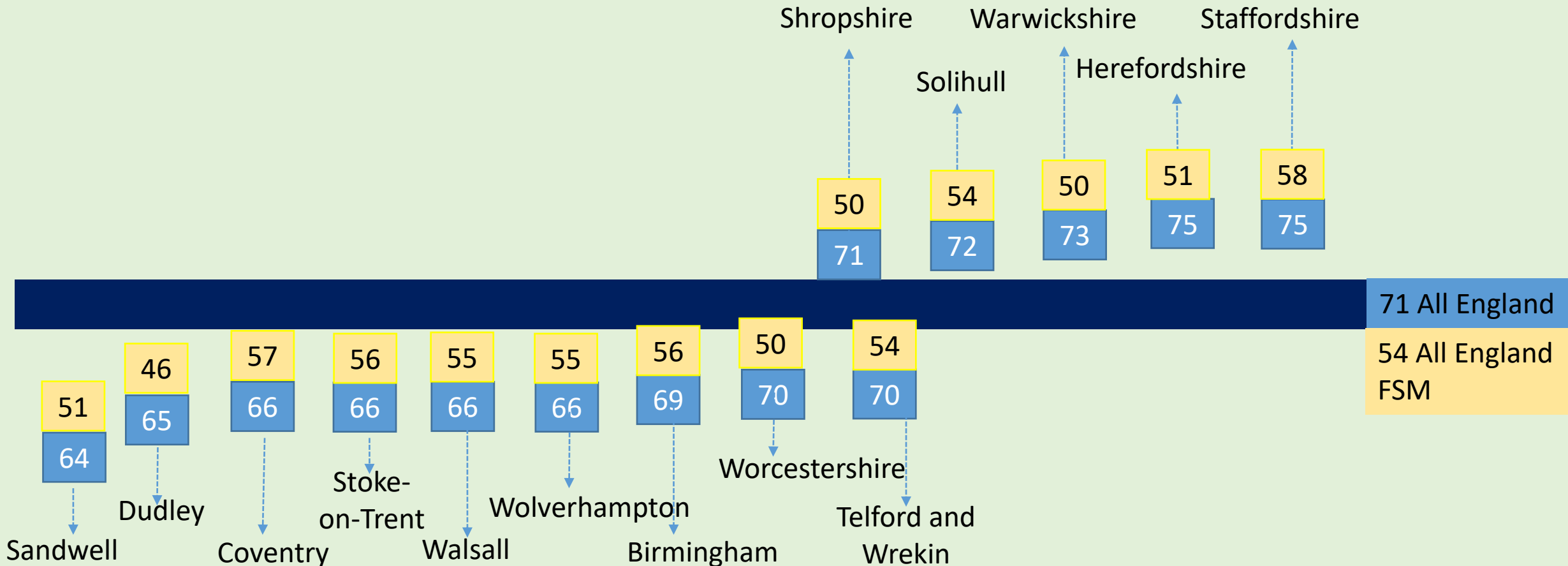
Current priorities

- Preparing for regionalisation.
- Working in partnership with regional colleagues.
- Providing training for inspectors.
- Carrying out inspections in line with the current inspection cycle.
- Prioritising inspections when information is received that causes concern.
- Undertaking inspection work outside of the West Midlands area.

What does the quality of early years look like in West Midlands



What about our disadvantaged children



Our engagement – the annual conversations

- Early years remains a priority
- Some good interventions
- Increasing oversight of early years from senior leaders
- Disjointed practice between health and education
- Quality of transition between schools and PVI is variable
- Renewed impetus for disadvantaged children

Ofsted on the web and on social media

www.gov.uk/ofsted

<https://reports.ofsted.gov.uk>

 www.linkedin.com/company/ofsted

 www.youtube.com/ofstednews

 www.slideshare.net/ofstednews

 www.twitter.com/ofstednews

